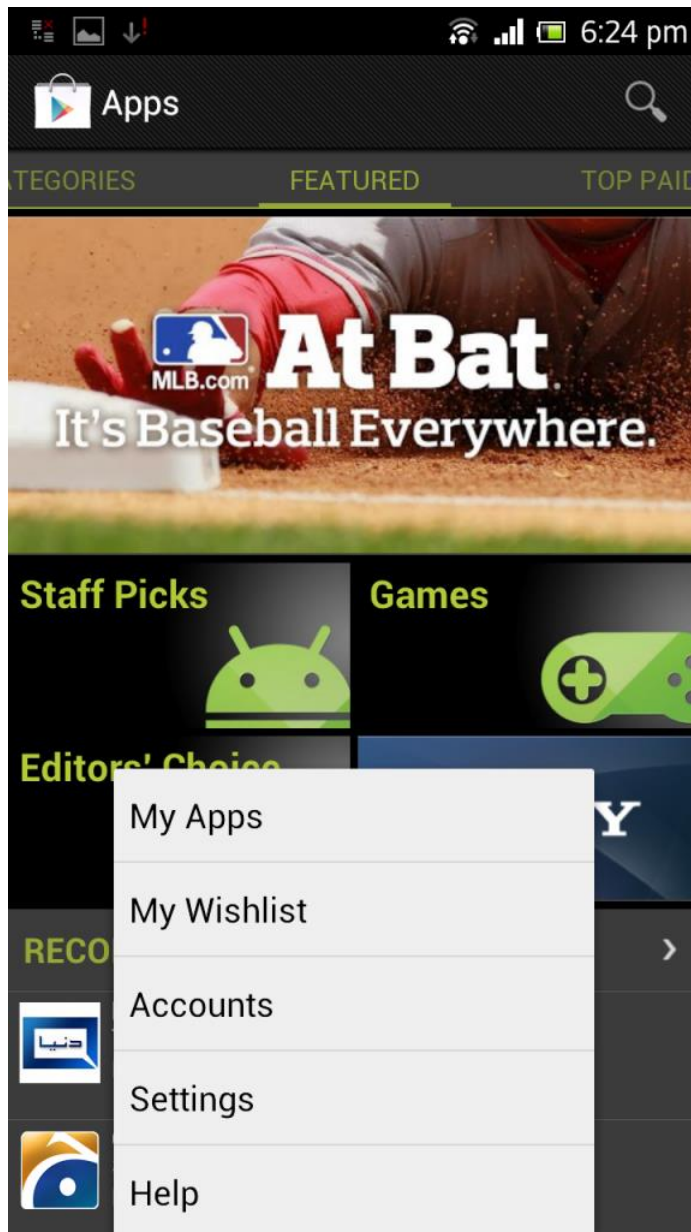


## How to set Parental control on Google Play store

As many families have different types of Android tablets, this guide will show how to set parental controls on the Google Play store as most use this to purchase apps. At the end of this guidance note, there are links to specific tablets and how to set up the controls on the HUFL, Kindle Fire, Samsung Galaxy and Nexus tablet.

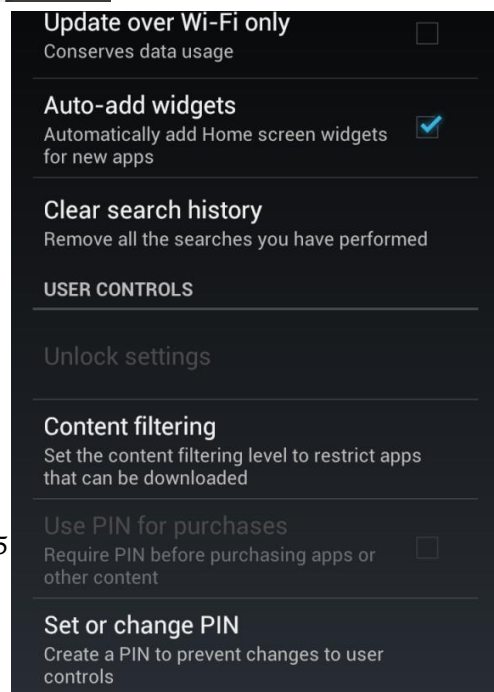
1. Open Google Play store on your device. If you do not have an account there, create it using your Gmail email id.

2. Once you are signed in, press the options button on your device. The following menu will show up on the screen as you press

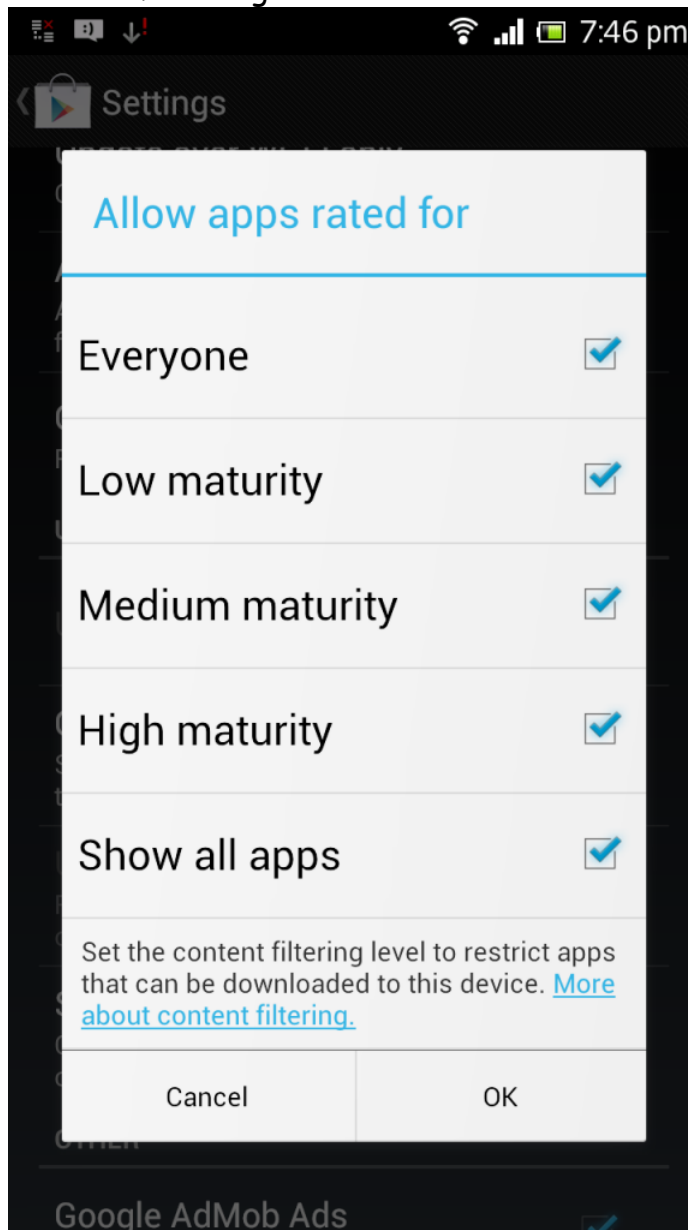


it.

3. From this menu, select **Settings**. After that you will see a window similar to this image.
4. Here you will see different options. Scroll down to **Content Filtering** category.



5. Open the **Content Filtering** by selecting this option. A new window will appear with the following check



- options.
6. These options will determine which type of content or apps to show in Google Play store on your device. There are three levels of this - Low

Maturity, Medium Maturity and High Maturity. You can check or uncheck depending on the age of your child. After you have selected the options, click **OK**.

## Rating types

### Everyone

Applications in this category should not collect user's location data or contain objectionable material. Applications should not share user content or include social features.

### Low maturity

Applications in this category may include instances of mild cartoon or fantasy violence or other potentially offensive content. Applications may collect user location data for the purpose of providing location specific information or otherwise improving the user experience, but should not share the data with other users. Applications may include some social features but should not focus on allowing users to find and communicate with each other.

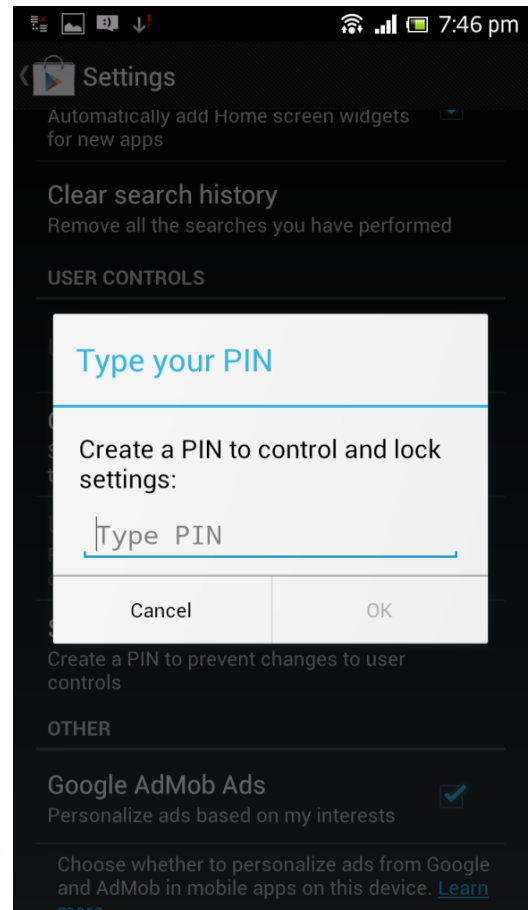
### Medium maturity

Applications in this category may include sexual references; intense fantasy or realistic violence; profanity or crude humor; references to drug, alcohol and tobacco use; social features and simulated gambling. Applications may collect user location data for the purpose of sharing or publishing with the user's consent.

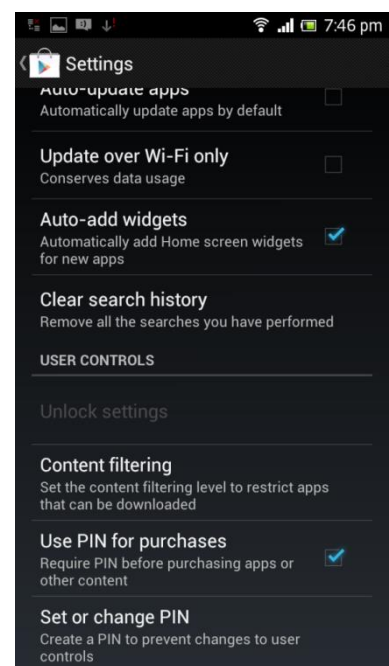
### High maturity

Applications in this category may focus on or include frequent instances of sexual and suggestive content; graphic violence; social features; simulated gambling; and strong alcohol, tobacco and drug references. Applications may collect user location data for the purpose of sharing or publishing with the user's consent.

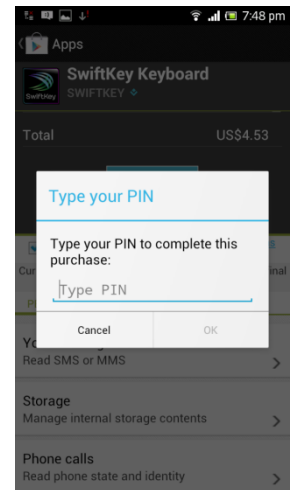
7. Go back to **User Controls** category, you will see **Set or Change PIN option**. Select it and it will open the window for you to set the pin.
8. Remember to set a PIN greater than or equal to 4 digits only. No alphabets or special characters are allowed.
9. Once you have set the PIN, click **OK** and it will reconfirm the PIN from you. Enter the PIN again and press **OK**.



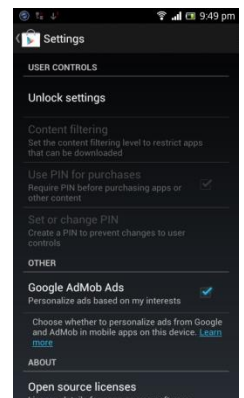
10. Now you will notice that **Use PIN for Purchases** option is now enabled with a checkbox in front of it. Simply check this box and press the back button on your device to go back to Google Play Store.



11. After this, when you are about to make a purchase, you will be asked to enter the same PIN again to complete the purchase process. If you fail to enter the correct PIN, it will deny the purchase.



12. When you go back to Settings by pressing the options button on your device, you will see that the **User Controls** options are all grayed out and there is an option called 'Unlock Settings.' This option requires you to enter the PIN to unlock the other settings so that you can change the **Content Filtering** or Change the PIN



### **Additional parental controls that can be set on devices:**

Setting up a safe search on a Tesco Hudl

[http://ttselectrical.custhelp.com/app/answers/detail/a\\_id/3657/session/L2F2LzEvdGltZS8xNDI1OTkwODE5L3NpZC9mSE5GQllnbQ%3D%3D](http://ttselectrical.custhelp.com/app/answers/detail/a_id/3657/session/L2F2LzEvdGltZS8xNDI1OTkwODE5L3NpZC9mSE5GQllnbQ%3D%3D)

Applying Google Content filters on a Tesco Hudl

[http://ttselectrical.custhelp.com/app/answers/detail/a\\_id/3661/session/L2F2LzEvdGltZS8xNDI1OTkwODE5L3NpZC9mSE5GQllnbQ%3D%3D](http://ttselectrical.custhelp.com/app/answers/detail/a_id/3661/session/L2F2LzEvdGltZS8xNDI1OTkwODE5L3NpZC9mSE5GQllnbQ%3D%3D)

Setting up your Kindle Fire For Kids

<http://www.amazon.co.uk/gp/help/customer/display.html?nodeId=201016260>

Turn off in app purchasing on a Kindle Fire

<http://www.amazon.co.uk/gp/help/customer/display.html?nodeId=201240910>

Setting parental controls on Kindle Fire

<http://www.amazon.co.uk/gp/help/customer/display.html?nodeId=201239550>

Kids mode on a Samsung Galaxy tablet

<http://www.samsung.com/us/support/howtoguide/N0000005/16596/225786/S-M-G900TZWATMB>

Setting parental controls on a Nexus

<http://blog.laptopmag.com/restricted-profiles-nexus-7>

